

# Village of Hines Creek Council Request for Decision (RFD)

Meeting:	Regular Council Meeting
Meeting Date:	March 12, 2019
Originated By:	Leanne Walmsley, Chief Administrative Officer
Title:	Unfinished Business – Peace River School Division – Transportation Boundary Review
File:	0113

## BACKGROUND/PROPOSAL:

Clear Hills County CAO Allen Rowe and I met with Superintendent Paul Bennett and Secretary Rhonda Freeman to outline the attached Transportation Boundary Review.

## DISCUSSION/OPTIONS/BENEFITS/DISADVANTAGES

The following options were discussed as possible solutions to the boundary review request

1. Status Quo
2. Move boundary in couple places
3. Creating a School of Choice area.

They are proposing only 1 Community Consolation Meeting  
Location: David Thompson Hall  
Date: To be determined

After the Public Consolation the process will be as follows:

- Financial
- Compilation of information from meeting
- Discussion to follow their Board in June 2019
- Implementation to begin with school year in September 2019

Attached:

- Proposed Boundary Change No. 1
- Proposed Boundary Change No. 2
- School of Choice Proposed Boundary Change No. 1
- School of Choice Proposed Boundary Change No. 2.
- School Enrolment Summary for E.E. Oliver/Fairview High/Hines Creek 2004-2018

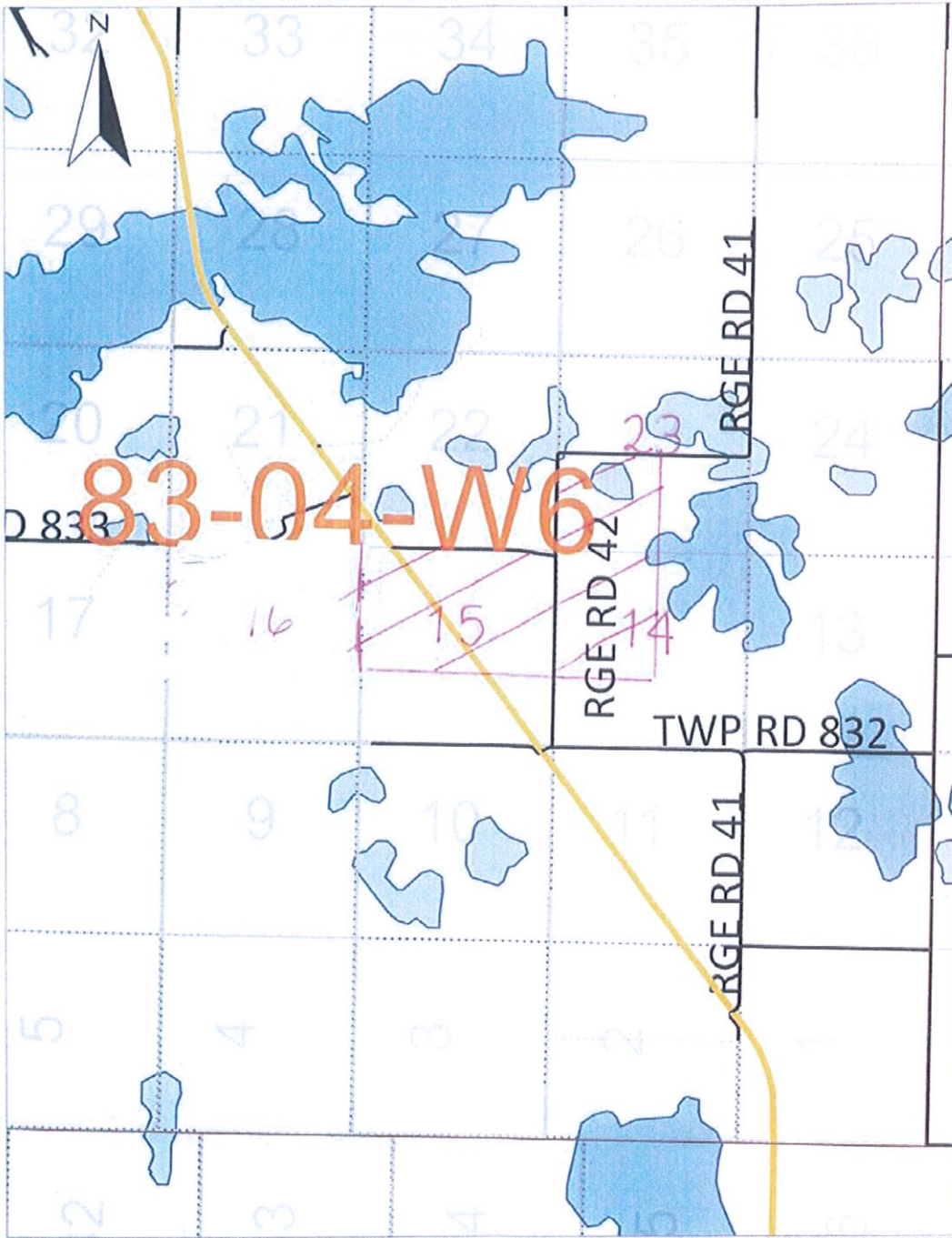
RECOMMENDED ACTION:

That Council receives the Peace River School Division Transportation Boundary Review as information and that authorizes the attendance on Council at the Community Consolation Meeting to be held at the David Thompson Hall.

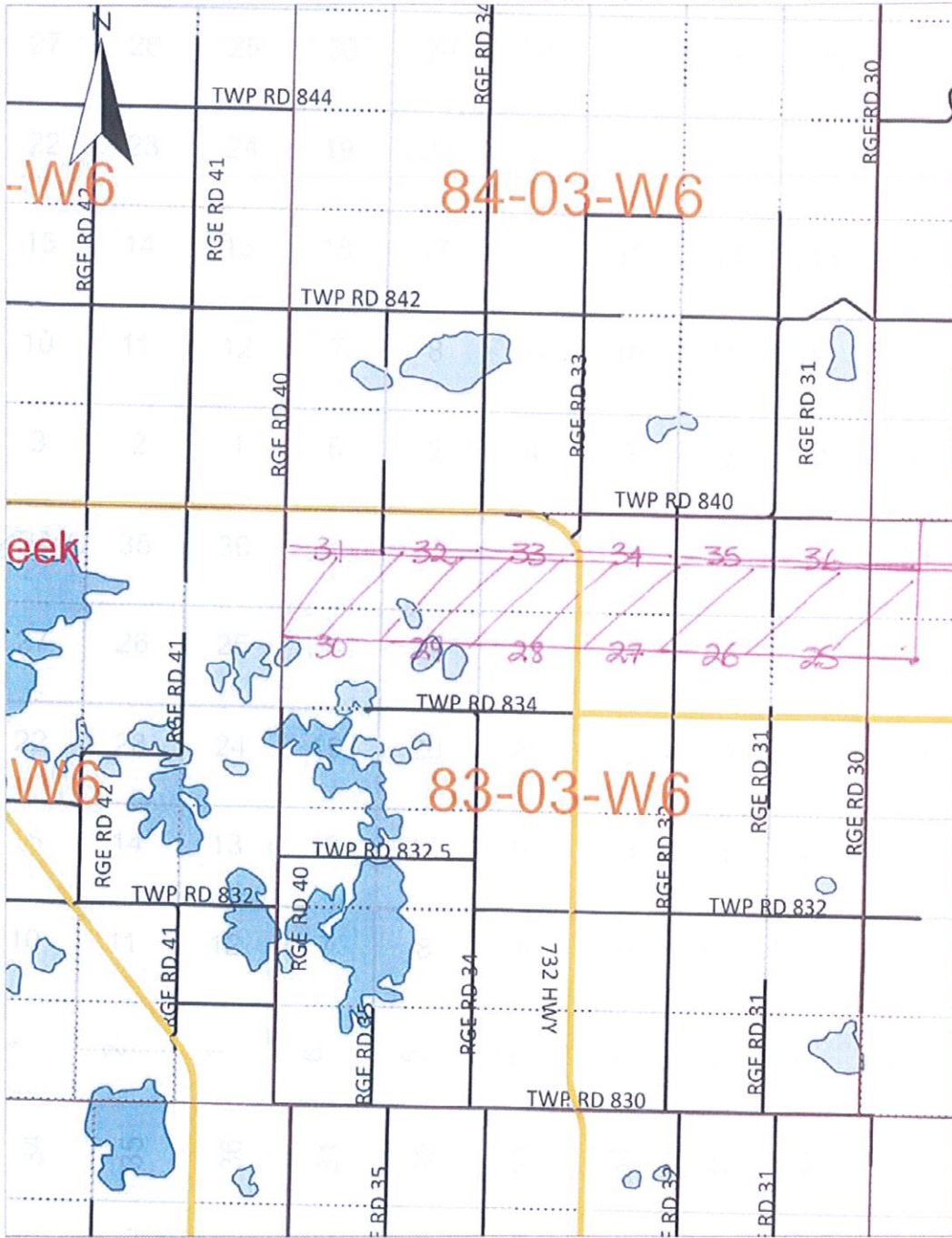
Initials show support- Reviewed by:	Manager:	C.A.O. <i>AW</i>
-------------------------------------	----------	------------------

PROPOSED BOUNDARY CHANGE

①



# PROPOSED BOUNDARY CHANGE - 2



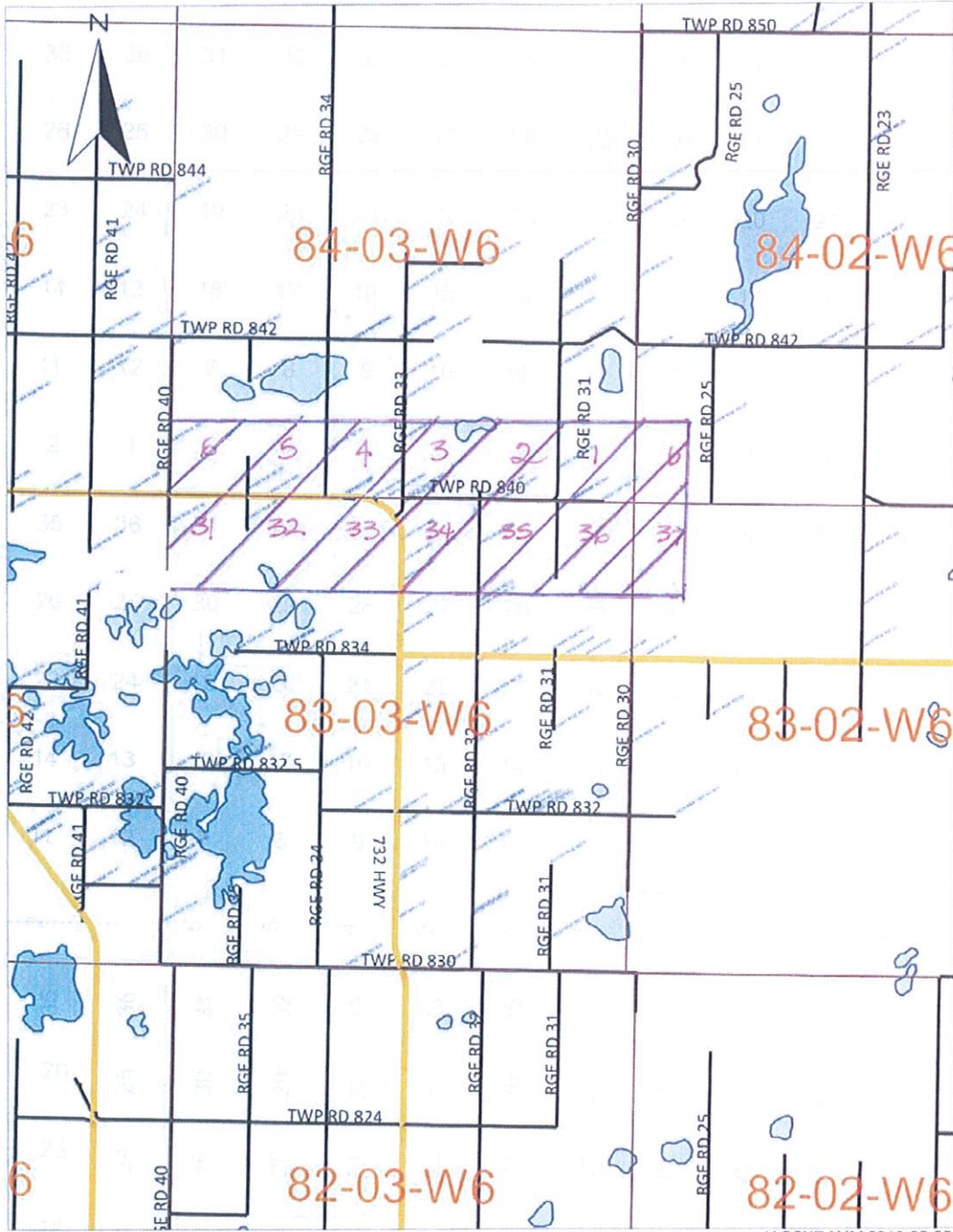
H. SCHRAMM 2019-02-25

*Double pink line marks current boundary.*

School of Choice

2

# PROPOSED BOUNDARY CHANGE

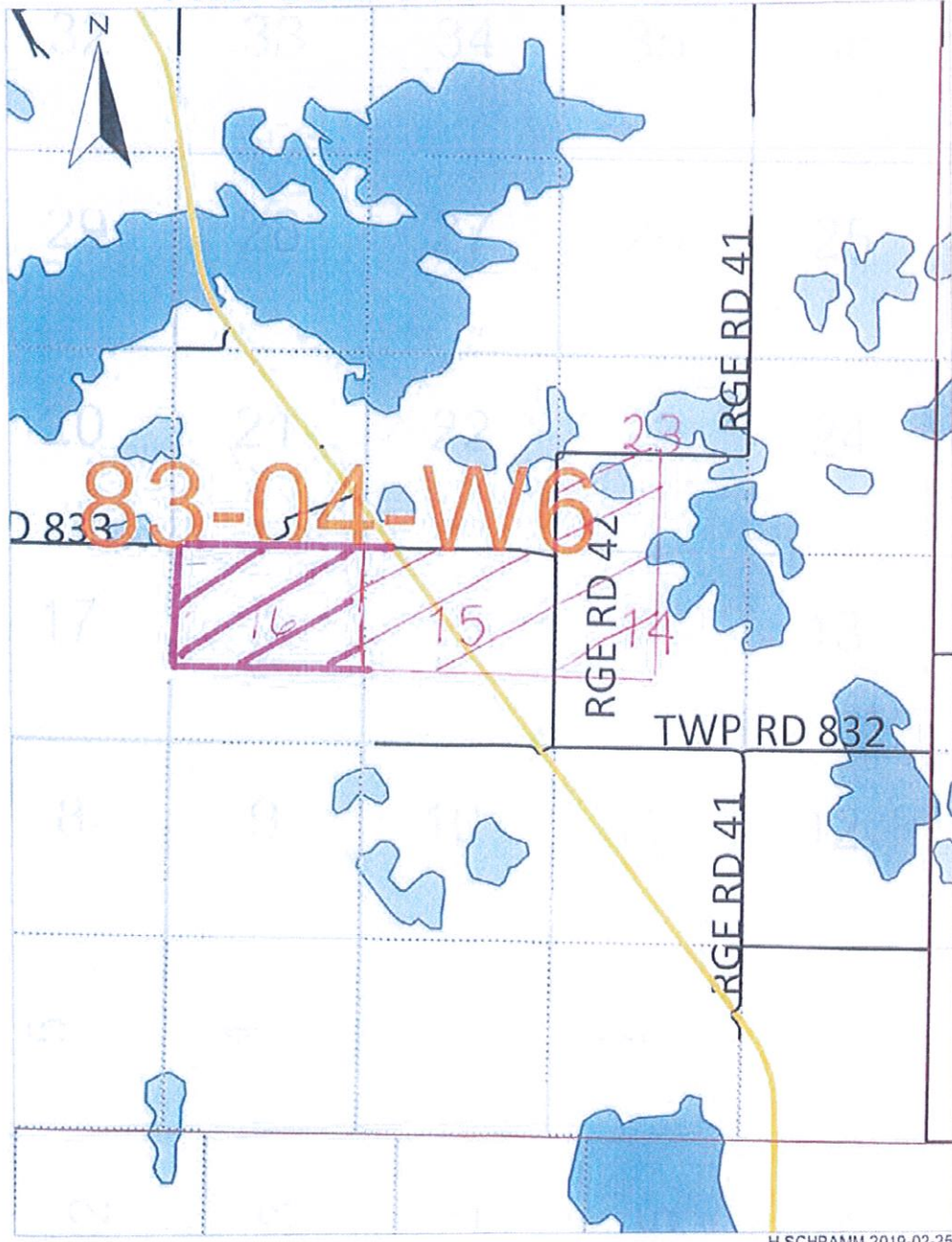




SOC

2

PROPOSED BOUNDARY CHANGE



**School Enrolment Summary**

EE Oliver	03-Sep	Sep-04	Sep-05	Sep-06	Sep-07	Sep-08	Sep-09	10-Sep	11-Sep	Sep-12	Sep-13	Sep-14	Sep-15	Sep-16	Sep-17	Sep-18
ECS	52	54	53	53	63	57	80	54	63	68	41	47	48	53	38	44
1	53	35	44	52	53	59	56	63	47	52	60	38	36	33	45	32
2	48	51	32	43	47	56	55	49	62	43	51	59	36	32	35	45
3	52	43	50	36	45	49	61	55	53	60	42	47	59	37	28	37
4	59	49	39	50	37	44	49	55	55	55	52	39	43	60	39	29
5	67	54	52	40	51	35	48	45	54	59	50	44	33	38	58	42
6	55	61	54	52	46	55	42	45	48	60	56	48	40	33	44	60
<b>Totals</b>	<b>386</b>	<b>347</b>	<b>324</b>	<b>326</b>	<b>342</b>	<b>355</b>	<b>391</b>	<b>366</b>	<b>382</b>	<b>397</b>	<b>362</b>	<b>322</b>	<b>295</b>	<b>286</b>	<b>287</b>	<b>289</b>
Enrolment Decline																
using 2004 as																
base year																
	10.10%	16.06%	15.54%	11.40%	8.03%	-1.30%	5.18%	1.04%	-2.85%	8.81%	16.58%	23.58%	25.91%	25.65%	25.13%	25.13%

Fairview High	03-Sep	Sep-04	Sep-05	Sep-06	Sep-07	Sep-08	Sep-09	10-Sep	11-Sep	Sep-12	Sep-13	Sep-14	Sep-15	Sep-16	Sep-17	Sep-18
7	44	60	73	62	59	50	62	39	50	53	60	50	45	48	36	46
8	61	41	54	74	62	64	55	66	41	47	51	55	50	46	52	38
9	59	64	41	54	78	55	64	54	66	39	48	49	53	51	42	44
10	56	61	70	47	58	72	61	62	56	72	40	39	47	53	49	42
11	58	48	63	69	44	50	76	56	55	50	65	39	29	47	52	43
12	54	55	43	62	72	42	52	63	45	55	45	57	41	31	41	53
<b>Totals</b>	<b>332</b>	<b>329</b>	<b>344</b>	<b>368</b>	<b>373</b>	<b>333</b>	<b>370</b>	<b>340</b>	<b>313</b>	<b>316</b>	<b>309</b>	<b>289</b>	<b>265</b>	<b>276</b>	<b>272</b>	<b>266</b>
Enrolment Decline																
using 2004 as																
base year																
	0.90%	-3.61%	-10.84%	-12.35%	-0.30%	-11.45%	-2.41%	5.72%	4.82%	6.93%	12.95%	20.18%	16.87%	18.07%	19.88%	19.88%

### School Enrolment Summary

Hines Creek	03-Sep	Sep-04	Sep-05	Sep-06	Sep-07	Sep-08	Sep-09	10-Sep	11-Sep	Sep-12	Sep-13	Sep-14	Sep-15	Sep-16	Sep-17	Sep-18
ECS	19	19	18	15	14	20	14	15	18	15	17	13	11	14	12	12
1	17	19	16	18	14	13	18	16	17	16	16	18	13	14	14	8
2	16	15	18	15	18	12	15	19	16	17	15	18	18	13	10	12
3	13	15	12	19	16	18	13	14	17	13	18	13	17	18	12	11
4	19	13	14	11	19	16	19	16	16	16	15	17	12	14	16	12
5	20	20	10	16	10	17	14	20	13	17	17	15	16	12	14	14
6	16	21	19	11	14	10	17	13	19	9	17	15	16	16	11	14
7	17	16	17	19	10	14	11	16	15	18	9	17	15	15	17	11
8	7	16	16	18	15	11	13	11	15	17	19	11	16	16	16	18
9	12	7	13	15	18	13	11	14	13	15	18	18	11	14	16	14
10	24	12	7	14	12	19	15	12	13	13	14	17	18	10	15	19
11	11	20	6	7	9	11	19	14	10	14	14	14	17	17	12	13
12	16	13	17	9	6	9	10	16	15	10	13	13	12	15	14	10
<b>Totals</b>	<b>207</b>	<b>206</b>	<b>183</b>	<b>187</b>	<b>175</b>	<b>183</b>	<b>189</b>	<b>196</b>	<b>197</b>	<b>190</b>	<b>202</b>	<b>199</b>	<b>192</b>	<b>188</b>	<b>179</b>	<b>168</b>
<b>Enrolment Decline using 2004 as base year</b>		<b>0.48%</b>	<b>11.59%</b>	<b>9.86%</b>	<b>15.46%</b>	<b>11.59%</b>	<b>8.70%</b>	<b>5.31%</b>	<b>4.83%</b>	<b>8.21%</b>	<b>2.42%</b>	<b>3.86%</b>	<b>7.25%</b>	<b>9.18%</b>	<b>13.53%</b>	<b>18.84%</b>